

PDHB Antibody (monoclonal) (M03)**Mouse monoclonal antibody raised against a partial recombinant PDHB.****Catalog # AT3259a****Specification**

PDHB Antibody (monoclonal) (M03) - Product Information

Application	WB, IHC, E
Primary Accession	P11177
Other Accession	NM_000925
Reactivity	Human
Host	mouse
Clonality	Monoclonal
Isotype	IgG1 Kappa
Calculated MW	39233

PDHB Antibody (monoclonal) (M03) - Additional Information**Gene ID** 5162**Other Names**

Pyruvate dehydrogenase E1 component subunit beta, mitochondrial, PDHE1-B, PDHB, PHE1B

Target/Specificity

PDHB (NP_000916, 250 a.a. ~ 359 a.a) partial recombinant protein with GST tag. MW of the GST tag alone is 26 KDa.

Dilution

WB~~1:500~1000

IHC~~1:100~500

E~~N/A

Format

Clear, colorless solution in phosphate buffered saline, pH 7.2 .

Storage

Store at -20°C or lower. Aliquot to avoid repeated freezing and thawing.

Precautions

PDHB Antibody (monoclonal) (M03) is for research use only and not for use in diagnostic or therapeutic procedures.

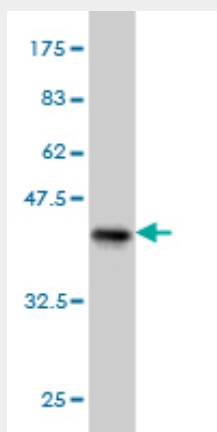
PDHB Antibody (monoclonal) (M03) - Protocols

Provided below are standard protocols that you may find useful for product applications.

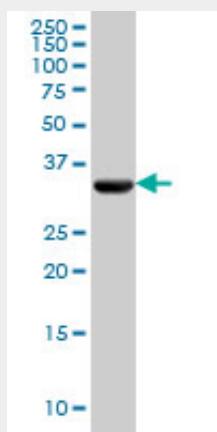
- [Western Blot](#)
- [Blocking Peptides](#)

- [Dot Blot](#)
- [Immunohistochemistry](#)
- [Immunofluorescence](#)
- [Immunoprecipitation](#)
- [Flow Cytometry](#)
- [Cell Culture](#)

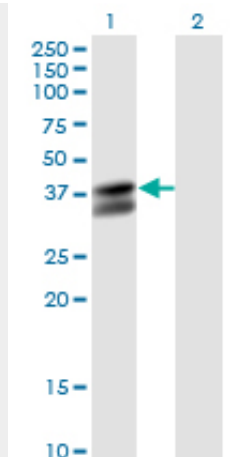
PDHB Antibody (monoclonal) (M03) - Images



Antibody Reactive Against Recombinant Protein. Western Blot detection against Immunogen (37.84 kDa) .



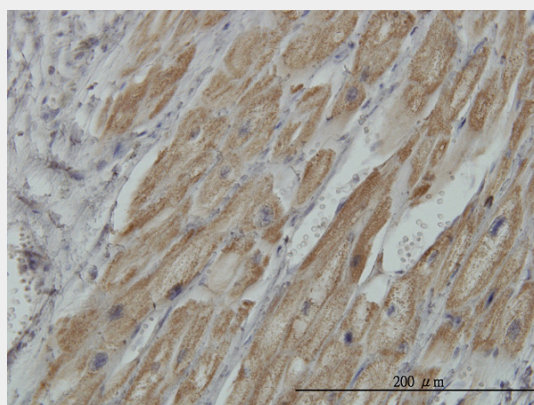
PDHB monoclonal antibody (M03), clone 2B2 Western Blot analysis of PDHB expression in HeLa (Cat # AT3259a)



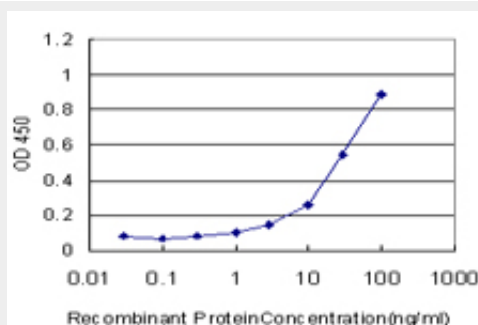
Western Blot analysis of PDHB expression in transfected 293T cell line by PDHB monoclonal antibody (M03), clone 2B2.

Lane 1: PDHB transfected lysate(39.2 KDa).

Lane 2: Non-transfected lysate.



Immunoperoxidase of monoclonal antibody to PDHB on formalin-fixed paraffin-embedded human heart. [antibody concentration 3 ug/ml]



Detection limit for recombinant GST tagged PDHB is approximately 1ng/ml as a capture antibody.

PDHB Antibody (monoclonal) (M03) - Background

The pyruvate dehydrogenase (PDH) complex is a nuclear-encoded mitochondrial multienzyme complex that catalyzes the overall conversion of pyruvate to acetyl-CoA and CO₂, and provides the primary link between glycolysis and the tricarboxylic acid (TCA) cycle. The PDH complex is composed of multiple copies of three enzymatic components: pyruvate dehydrogenase (E1), dihydrolipoamide acetyltransferase (E2) and lipoamide dehydrogenase (E3). The E1 enzyme is a

heterotetramer of two alpha and two beta subunits. This gene encodes the E1 beta subunit. Mutations in this gene are associated with pyruvate dehydrogenase E1-beta deficiency. Alternatively spliced transcript variants have been found for this gene.

PDHB Antibody (monoclonal) (M03) - References

1. Proteomics of uveal melanomas suggests HSP-27 as a possible surrogate marker of chromosome 3 loss. Coupland SE, Vorum H, Mandal N, Kalirai H, Honore B, Urbak SF, Lake SL, Dopierala J, Damato B. Invest Ophthalmol Vis Sci. 2010 Jan;51(1):12-20. Epub 2009 Jul 30.